

EDM Webinar

How to get started with CDMC on Microsoft's platform today

A conversation with



Jubair Patel
Director, Data Security and Governance Strategy
Microsoft



Moderated by **Mike Meriton** Co-Founder, EDM Council

- Joined EDM Council full-time 2015 to lead Industry Engagement
- EDM Council Co-Founder & First Chairman (2005-2007)
- EDM Council Finance Board Chair (2007-2015)
- Former CEO GoldenSource (2002-2015)
- Former Executive for D&B Software and Oracle
- FinTech Innovation Lab – Executive Mentor (2011 – Present)
- EDM Council COO (2020-2023)



Moderator



Mike Meriton

Co-Founder
EDM Council



Jubair Patel

Director, Data Security and
Governance Strategy
Microsoft



Cloud Data Management Capabilities (CDMC)

CDMC Working Group



Cloud Challenges

- **Regulatory Mandate:** safeguard cloud computing services to protect customers' sensitive information
- **Inefficiency:** data, technology, regulatory and planning challenges on nearly every cloud implementation
- **Complexity:** 89% of firms use 2 or more cloud providers*



CDMC Group Objectives

1. **Best Practices** for a hybrid-cloud world
2. **Cloud Data Controls** to meet regulatory obligations for protecting Sensitive Data
3. **Accelerate Trusted Cloud Adoption** modeled after the DCAM data management industry framework



Cloud Data Management Capabilities (CDMC) Industry Engagement



100+ Organizations – 300+ SME participants – Cross Industry Leading Organizations

CDMC Working Group



Cloud & Technology Providers



Regulatory Engagement



- **US:** Federal Reserve, SEC, CFTC, FDIC
- **Canada:** OSFI
- **UK:** BoE, FCA, ICO
- **EU:** ECB, ESMA (pending)
- **Germany:** BaFin
- **Switzerland:** FinMA
- **Australia:** APRA
- **Singapore:** MAS
- **Israel:** Bank of Israel
- **India:** RBI, SEBI (pending)
- **Africa/Middle East:** 20+ Regulators
- Others in process...

CDMC Adoption Support



- Training Courses
- Cloud Service Certification
- Open Source Tools
- CDMC Authorized Partner Program

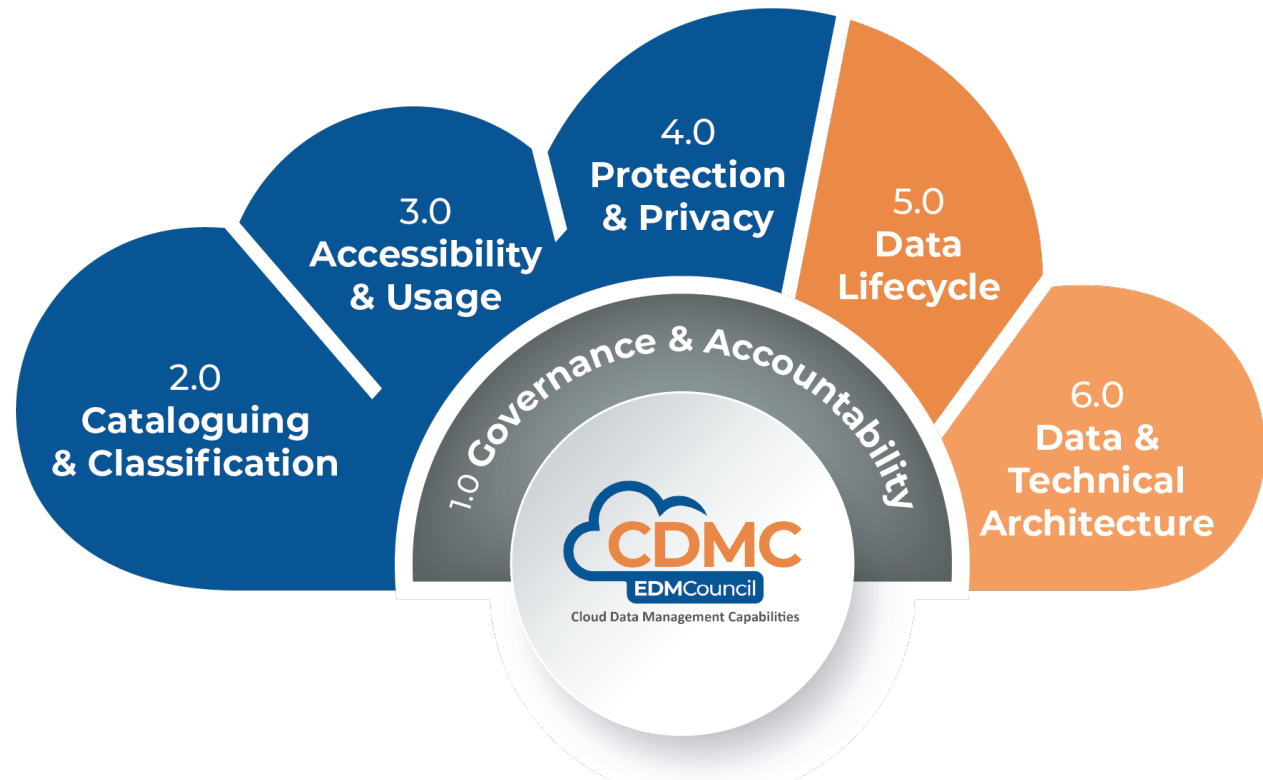
2022
CDMC Framework Validated
Cross Industry



- Life Sciences
- Telecommunications
- Manufacturing
- Retail / Services / CPG
- Consumer Tech
- Government / Defense

**CDMC Working Group Delivered release v1.1
28 September 2021**

CDMC Framework



Free Best practice framework for the migration, management, and enablement of sensitive data in cloud

160+ Pages

6 Components

14 Capabilities

37 Sub-capabilities

14 Key Controls

Free license – Download at:
EDMCouncil.org > Frameworks > CDMC



Microsoft Announces Native Availability of CDMC 14 Key Controls & Automations



March 20, 2023 • 5 min read

Microsoft achieves first native Cloud Data Management Capabilities certification

Mike Flasko Vice President and General Manager, Data Governance



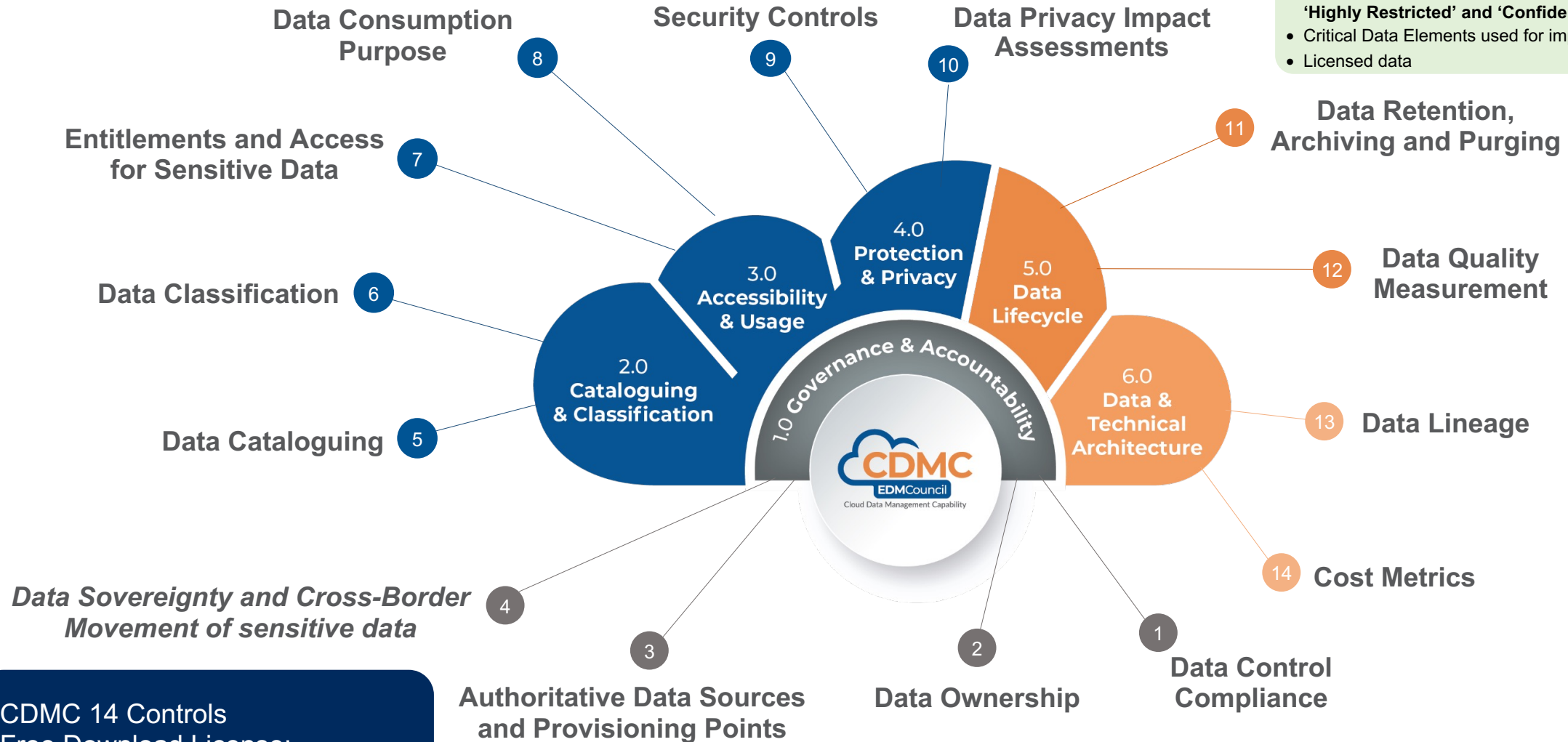
March 2023

Cloud Data Management Capabilities

14 Key Controls for Managing Data Risk

Sensitive Data includes classifications such as:

- Personal Information (PI) / Sensitive Personal Data
- Personally Identifiable Information (PII)
- Personal Health Information (PHI)
- Company or Client Identifiable Information
- Material Non-Public Information (MNPI)
- Specific Information Sensitivity Classifications (such as 'Highly Restricted' and 'Confidential')
- Critical Data Elements used for important business processes
- Licensed data



CDMC 14 Controls
Free Download License:
EDMCouncil.org > Frameworks



1.0 Governance & Accountability

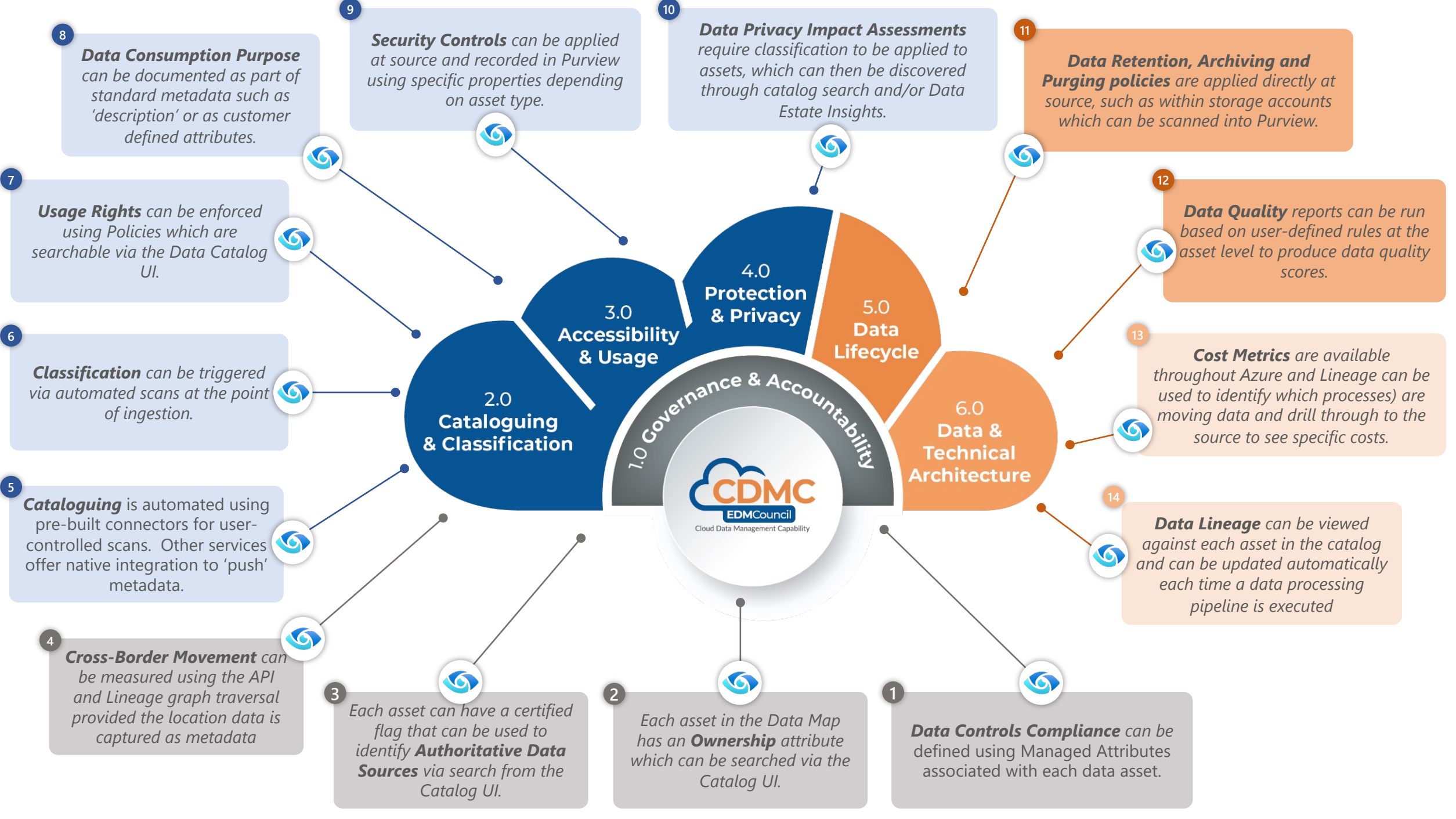
2.0 Cataloguing & Classification

3.0 Accessibility & Usage

4.0 Protection & Privacy

5.0 Data Lifecycle

6.0 Data & Technical Architecture



8 **Data Consumption Purpose** can be documented as part of standard metadata such as 'description' or as customer defined attributes.

9 **Security Controls** can be applied at source and recorded in Purview using specific properties depending on asset type.

10 **Data Privacy Impact Assessments** require classification to be applied to assets, which can then be discovered through catalog search and/or Data Estate Insights.

11 **Data Retention, Archiving and Purging policies** are applied directly at source, such as within storage accounts which can be scanned into Purview.

7 **Usage Rights** can be enforced using Policies which are searchable via the Data Catalog UI.

12 **Data Quality** reports can be run based on user-defined rules at the asset level to produce data quality scores.

6 **Classification** can be triggered via automated scans at the point of ingestion.

13 **Cost Metrics** are available throughout Azure and Lineage can be used to identify which processes are moving data and drill through to the source to see specific costs.

5 **Cataloguing** is automated using pre-built connectors for user-controlled scans. Other services offer native integration to 'push' metadata.

14 **Data Lineage** can be viewed against each asset in the catalog and can be updated automatically each time a data processing pipeline is executed

4 **Cross-Border Movement** can be measured using the API and Lineage graph traversal provided the location data is captured as metadata

3 Each asset can have a certified flag that can be used to identify **Authoritative Data Sources** via search from the Catalog UI.

2 Each asset in the Data Map has an **Ownership** attribute which can be searched via the Catalog UI.

1 **Data Controls Compliance** can be defined using Managed Attributes associated with each data asset.

dbo.Employee.parquet Certified

Azure Data Lake Storage Gen2 | File

★★★★☆ (1)

+ Add Tag

- Edit
- Select for bulk edit
- Request access**
- Refresh
- Delete
- Data share

Open in Power BI Desktop

- Overview**
- Properties
- Schema
- Lineage
- Contacts
- Related

Updated on June 8, 2023 at 2:30 PM

Managed attributes

Filter by attribute name Show attributes without a value

Business Ownership

Division	Division-B, Division-A
SubOrganisation	Finance
Team	Business

Compliance Management

CDMC Compliance Score	60.0
CDMC Compliance Status	Pass

Processing Cost 50

Data Residency

Cloud Region	Canada Central
Cross Border Movement Restriction	true

Usage Rights

Applicable Group	North America HR
Can be copied	false



HR-workday

Hierarchy

- stexternaldataplatfrom
Azure Storage Account
- stexternaldataplatfrom
Azure Data Lake Storage Gen2 Service
- curate
Azure Data Lake Storage Gen2 File System
- dbo.Employee.parquet
Azure Data Lake Storage Gen2 | File

Glossary terms

- Glossary
- Retail Customer
- Name
- Employee
- UK_South

Show less ^

- General
 - Overview
 - Metrics
- Lineage connections
 - Data Factory
 - Data Share
- Workflow (Preview)
 - Authoring
 - Requests and approvals
 - Workflow runs
- Security and access
 - Credentials
 - Managed private endpoints

Management > Authoring >

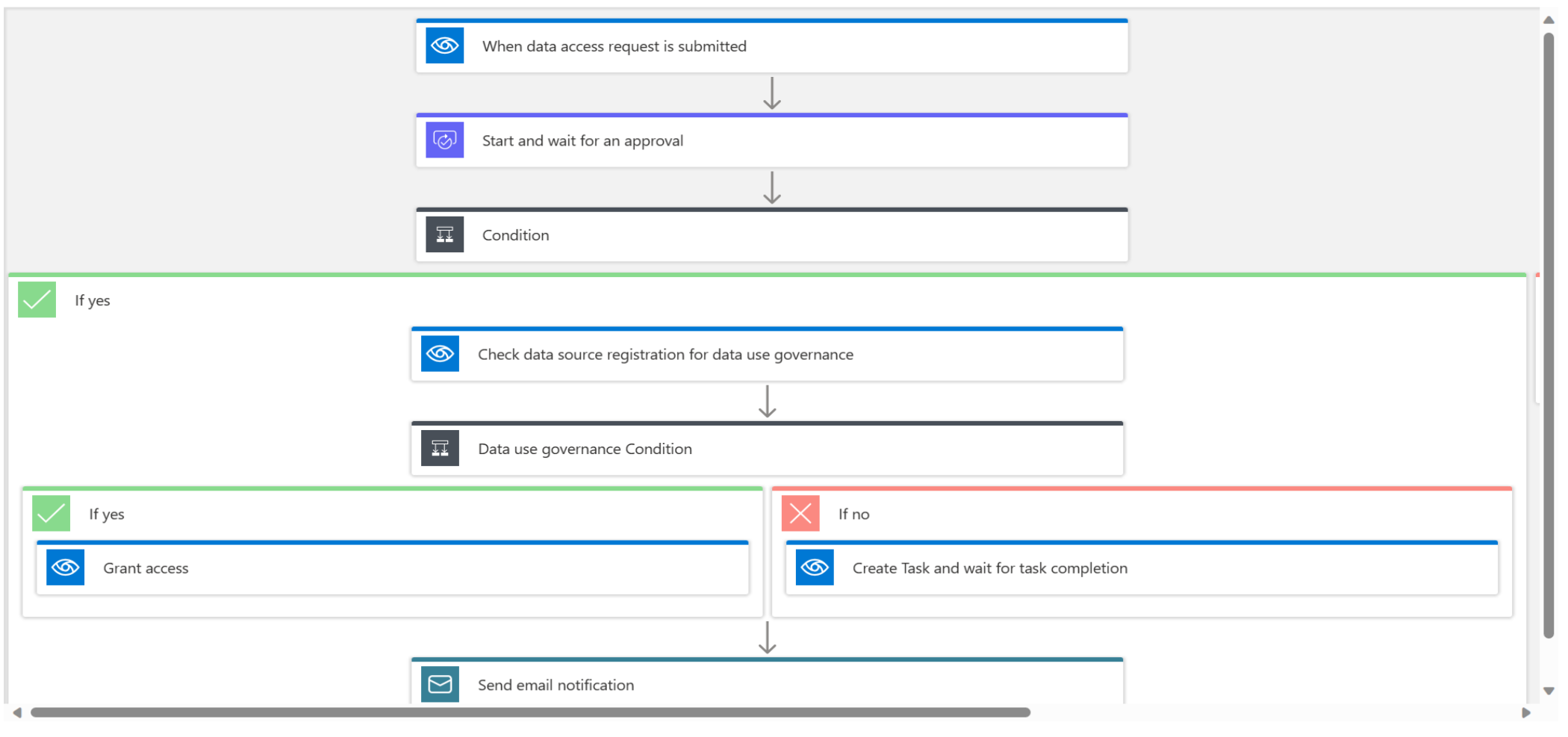
This PREVIEW feature is licensed to you as part of your Azure Subscription. By proceeding you acknowledge the Preview Terms and Privacy Statement

Data access request Gems

Microsoft Purview workflow

View name and description Delete Apply workflow View run history Enabled

You don't have required permission to edit this workflow, viewing it in read-only mode. Learn more



Save Cancel

dbo.Employee.parquet Certified

Azure Data Lake Storage Gen2 | File

+ Add Tag

★★★★☆ (1)

Edit Select for bulk edit Request access Refresh Delete Data share

Open in Power BI Desktop

Overview Properties Schema **Lineage** Contacts Related

Updated on June 8, 2023 at 2:30 PM

Search for assets or processes More lineage

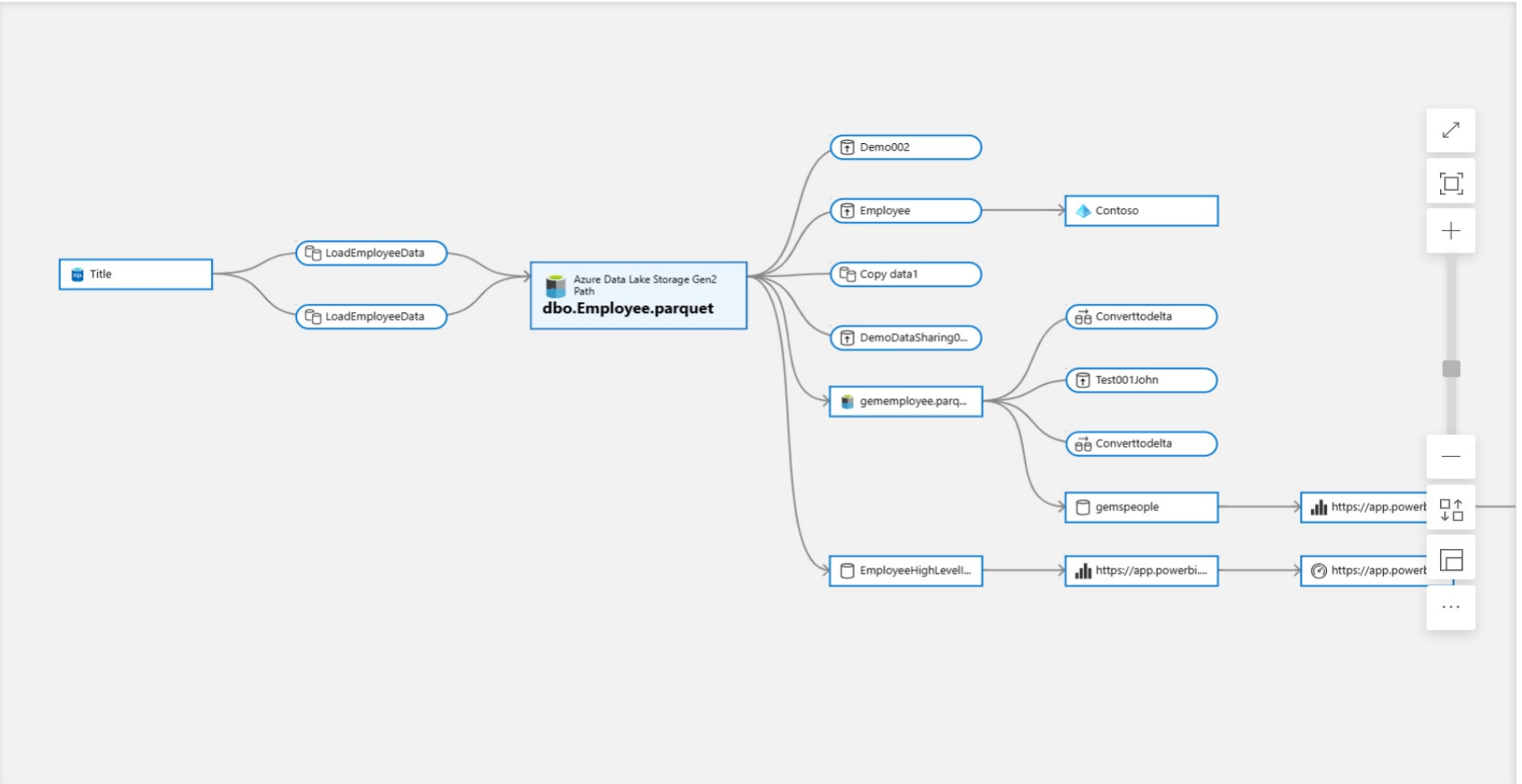
dbo.Employee.parquet Columns

Search and select columns

Show only assets with all 0 columns

Columns

- BaseRate
- BirthDate
- CurrentFlag
- DepartmentName
- EmailAddress
- EmailAddress1
- EmergencyContactName
- EmergencyContactPhone
- EmployeeKey
- EmployeeNationalIDAlternateKey
- EndDate
- FirstName
- Gender



CDMC

Microsoft's Guide to Cloud Data Management

Microsoft's support aligned
to CDMC 14 Key Controls



Getting started with the CDMC framework— Microsoft's guide to cloud data management

Mike Flasko Vice President and General Manager, Data Governance and Privacy Platform

April 24, 2023



Share ▾

<https://www.microsoft.com/en-us/security/blog/2023/04/24/getting-started-with-the-cdmc-framework-microsofts-guide-to-cloud-data-management/>



Questions?



EDM Webinar 

CDMC

Microsoft's Guide to Cloud Data Management

Microsoft's support aligned
to CDMC 14 Key Controls



Getting started with the CDMC framework— Microsoft's guide to cloud data management

Mike Flasko Vice President and General Manager, Data Governance and Privacy Platform

April 24, 2023

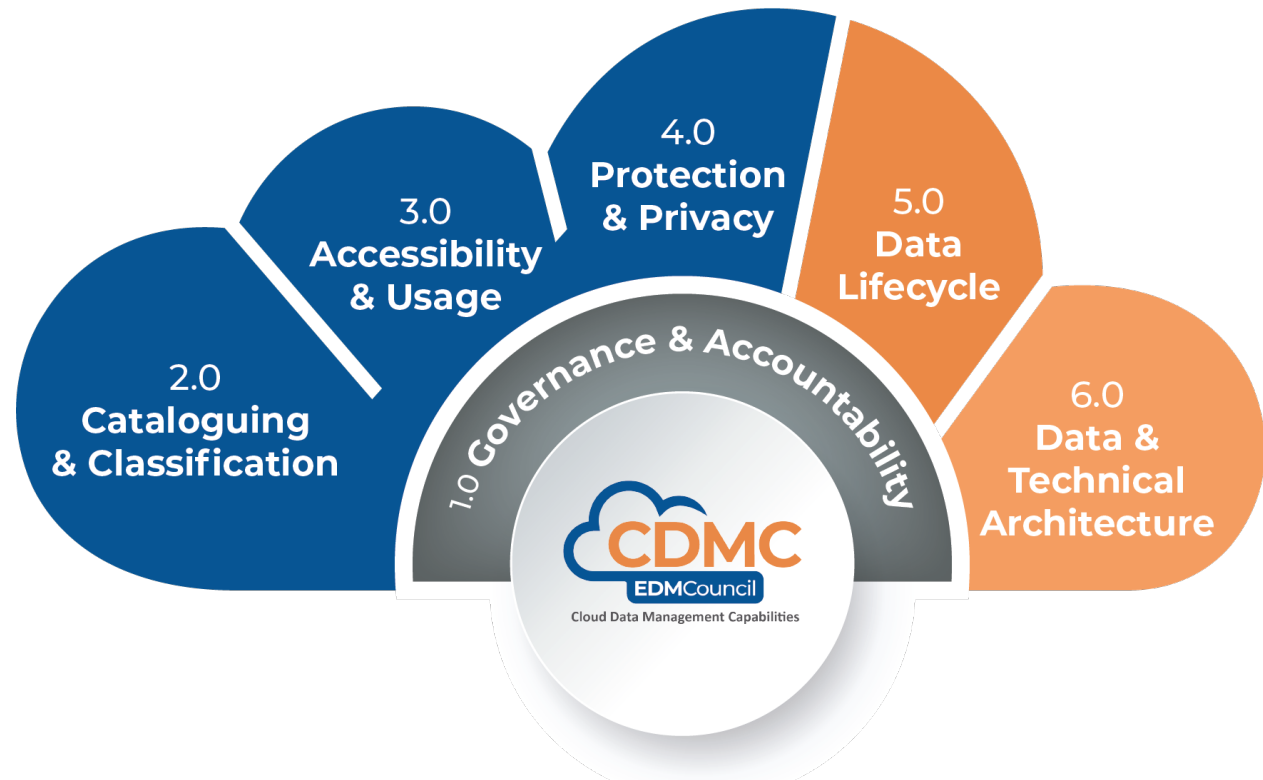


Share ▾

<https://www.microsoft.com/en-us/security/blog/2023/04/24/getting-started-with-the-cdmc-framework-microsofts-guide-to-cloud-data-management/>



CDMC Framework



Free Best practice framework for the migration, management, and enablement of sensitive data in cloud

160+ Pages

6 Components

14 Capabilities

37 Sub-capabilities

14 Key Controls

Free license – Download at:
EDMCouncil.org > Frameworks > CDMC



Join EDM Council and our membership community of companies...



The screenshot shows the EDM Council website homepage. The header includes the EDM Council logo and navigation links: Membership, Frameworks, Training, Engage, Innovation, About, Sign in, and Join now. The main content area features a large heading: "Global Advocates for Data & Analytics Management". Below this, a sub-heading reads: "The leading global trade association providing best practices, standards and education to data and business professionals in our data-driven world." A "What we do" button is visible. On the right side, there is a "TODAY'S HIGHLIGHTS" section with three news items: "Bank of Valletta becomes the newest member to join the EDM Council", "EDM Council welcomes Webber Wentzel as its newest member", and "Lion Group joins EDM Council as its newest member". At the bottom of the page, there is a banner with the text: "Join a vibrant community of 25,000+ business leaders, CDOs, and data and analytics professionals across all industries." Below this banner are logos for member organizations: Bank of England, NOVARTIS, HSBC, AWS, Schneider Electric, Microsoft, Google, and AEGON. Two buttons are present: "Explore membership" and "See all 350+ member organizations".



350+ Member Firms

Cross-industry,
including Regulators



25,000+

Professionals



Worldwide

Americas, Europe,
Africa, Asia, Australia

edm-council.org

