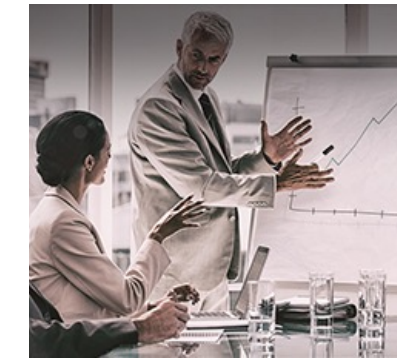


EDM Webinar

Help CDOs accelerate workloads to the cloud with the CDMC Framework
An AWS, SocGen, BT & Ford journey

A conversation with



Moderated by **Mike Meriton** Co-Founder & COO, EDM Council

- Joined EDM Council full-time 2015 to lead Industry Engagement
- EDM Council Co-Founder & First Chairman (2005-2007)
- EDM Council Finance Board Chair (2007-2015)
- Former CEO GoldenSource (2002-2015)
- Former Executive for D&B Software and Oracle
- FinTech Innovation Lab – Executive Mentor (2011 – Present)



Today's panel



Adam Honoré

Head,
FSI Service Development
AWS



Sanjay Ohri

Sr. Manager,
FSI Service Development
AWS



Bala Ayyar

Chief Data Officer -
Americas
Société Générale



Ben Clinch

Principal Enterprise
Architect
BT Group



Keeley Miles

Global Head of Data
Management
Ford Credit



What is CDMC?



The Enterprise Data Management (EDM) Council

Cross-industry non-profit global association created to lead best practices standards and education in data and analytics management

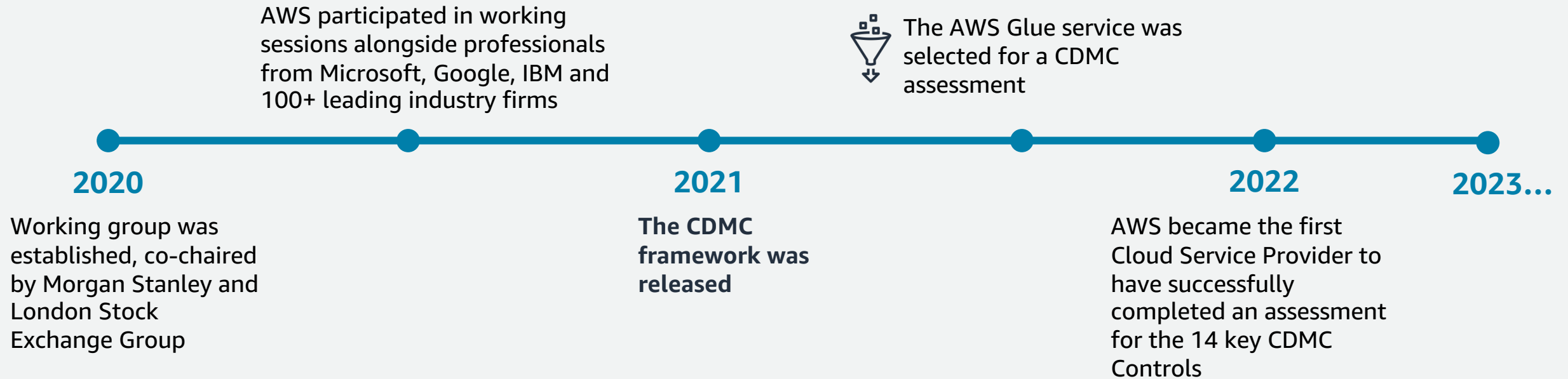
Data Management Capability Assessment Model (DCAM)

Established by EDMC, to define the scope of capabilities required to establish, enable and sustain a mature Data Management discipline

Cloud Data Management Capabilities (CDMC) Framework

An extension of DCAM released in 2021 to define best practices in implementing data management for moving sensitive data in the cloud

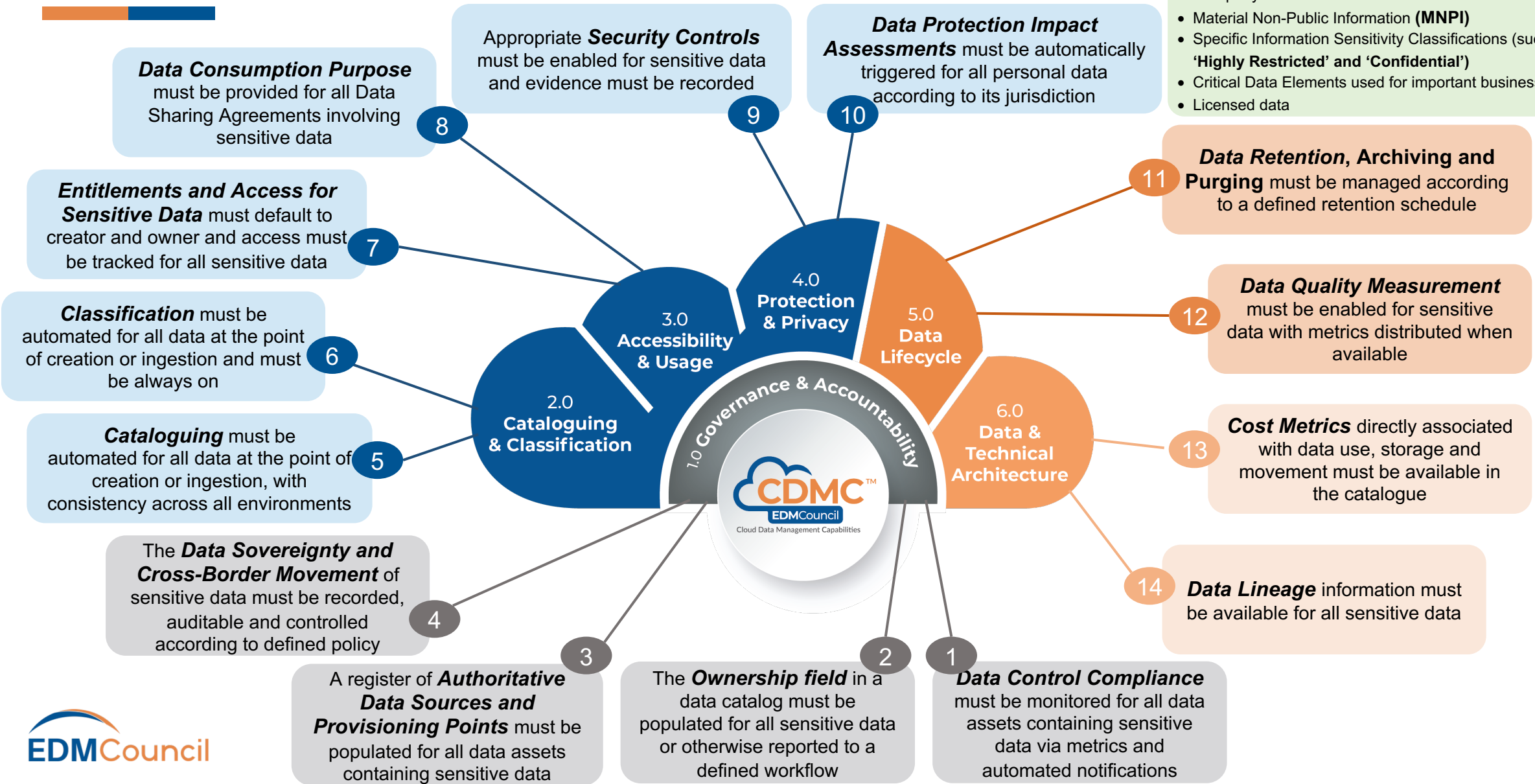
How has AWS engaged with CDMC?



Cloud Data Management Capabilities (CDMC) 14 Key Controls and Automations for Sensitive Data

Sensitive Data includes classifications such as:

- Personal Information (PI) / Sensitive Personal Data
- Personally Identifiable Information (PII)
- Personal Health Information (PHI)
- Company or Client Identifiable Information
- Material Non-Public Information (MNPI)
- Specific Information Sensitivity Classifications (such as 'Highly Restricted' and 'Confidential')
- Critical Data Elements used for important business processes
- Licensed data



How did the CDMC assessment process work?

1



Internal Assessment

- Based on AWS Financial Services customer feedback, the AWS Glue service was selected for a CDMC assessment
- An internal assessment was completed by the AWS Glue service team along with other AWS teams
- Evidence (artifacts) in support of the 14 key controls was also documented for reference

2



External Assessment

- AWS engaged an EDM Council Authorized Partner to perform the external assessment
- The firm requested evidence for the AWS team to demonstrate alignment of AWS Glue with the 14 CDMC controls
- The firm set up an AWS test environment to analyze this evidence and held working sessions with AWS teams to discuss the artifacts, analyze the findings, and follow up

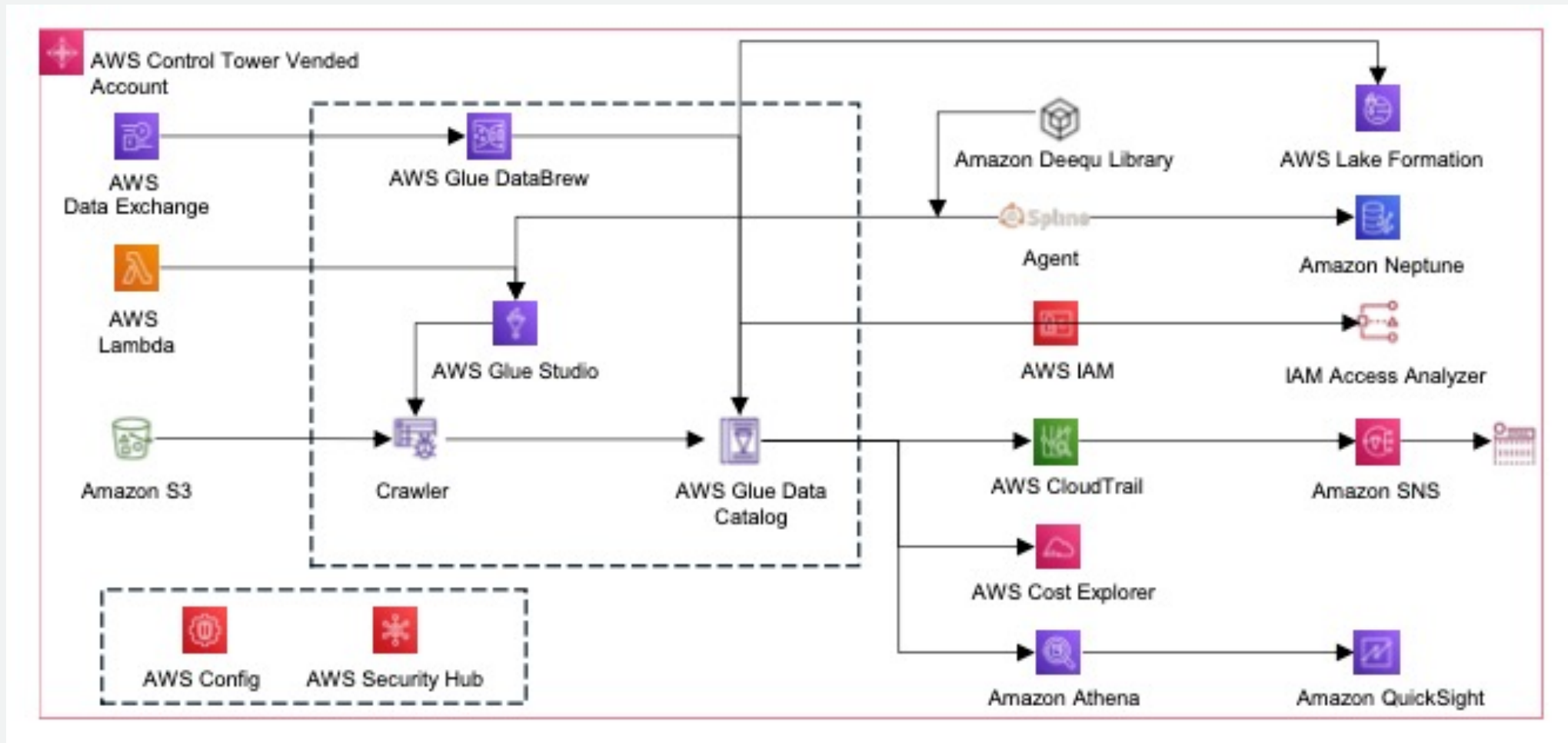
3



Result

- The firm concluded that the AWS Glue blueprint successfully aligned to the 14 CDMC controls, which are met natively with AWS Glue, and the comprehensive set of functionalities are enabled with orchestrated AWS services and open-source tools in the reference architecture
- **In October 2022, AWS became the first Cloud Service Provider to have successfully completed an assessment for the 14 key CDMC Controls!**

Sample AWS Glue Architecture aligned to CDMC



Additional AWS Services & Use Cases for Data Management



Amazon DataZone

IN PUBLIC PREVIEW

Amazon DataZone is a new data management service that makes it faster and easier for customers to catalog, discover, share, and govern data stored across AWS, on-premises, and third-party sources. Administrators and data stewards who oversee an organization's data assets can manage and govern access to data using fine-grained controls to ensure it is accessed with the right level of privileges and in the right context.

[Website](#) [Preview](#)

Financial Services Use Cases

- **Build a data mesh** – Financial Services organizations can simplify data mesh deployments by enabling the integration of technical data catalogs with the business catalog to get a 360-degree view of all your trusted business data regardless of where it is stored.
- **Enable self-service datasets** – Data consumers can locate and get access to datasets they need for advanced analytics and machine learning.
- **Audit dataset use** – More efficiently provide regulators information on access controls and audit logs for a variety of datasets, including customer information, PII, and sensitive financial data.

AWS Clean Rooms

GENERALLY AVAILABLE

AWS Clean Rooms helps customers and their partners to more easily and securely match, analyze, and collaborate on their combined datasets—without sharing or revealing underlying data.

With AWS Clean Rooms, customers can create a secure data clean room in minutes, and collaborate with any other company on the AWS Cloud to generate unique insights about advertising campaigns, investment decisions, and research and development.

[Website](#)

[FAQs](#)

[Ask an Expert](#)

Financial Services Use Cases

- **Private equity/Mergers & Acquisitions** – Safely share sensitive data as part of pre-transaction due diligence.
- **Industry collaboration** – Train ML models on datasets across multiple companies to generate greater insights about customers or for investment decisions, for example.
- **Internal data sharing** – Securely analyze sensitive datasets across divisions of your organization to enable greater collaboration, learning, and business efficiency.





Thank you!

Adam Honoré
Sanjay Ohri

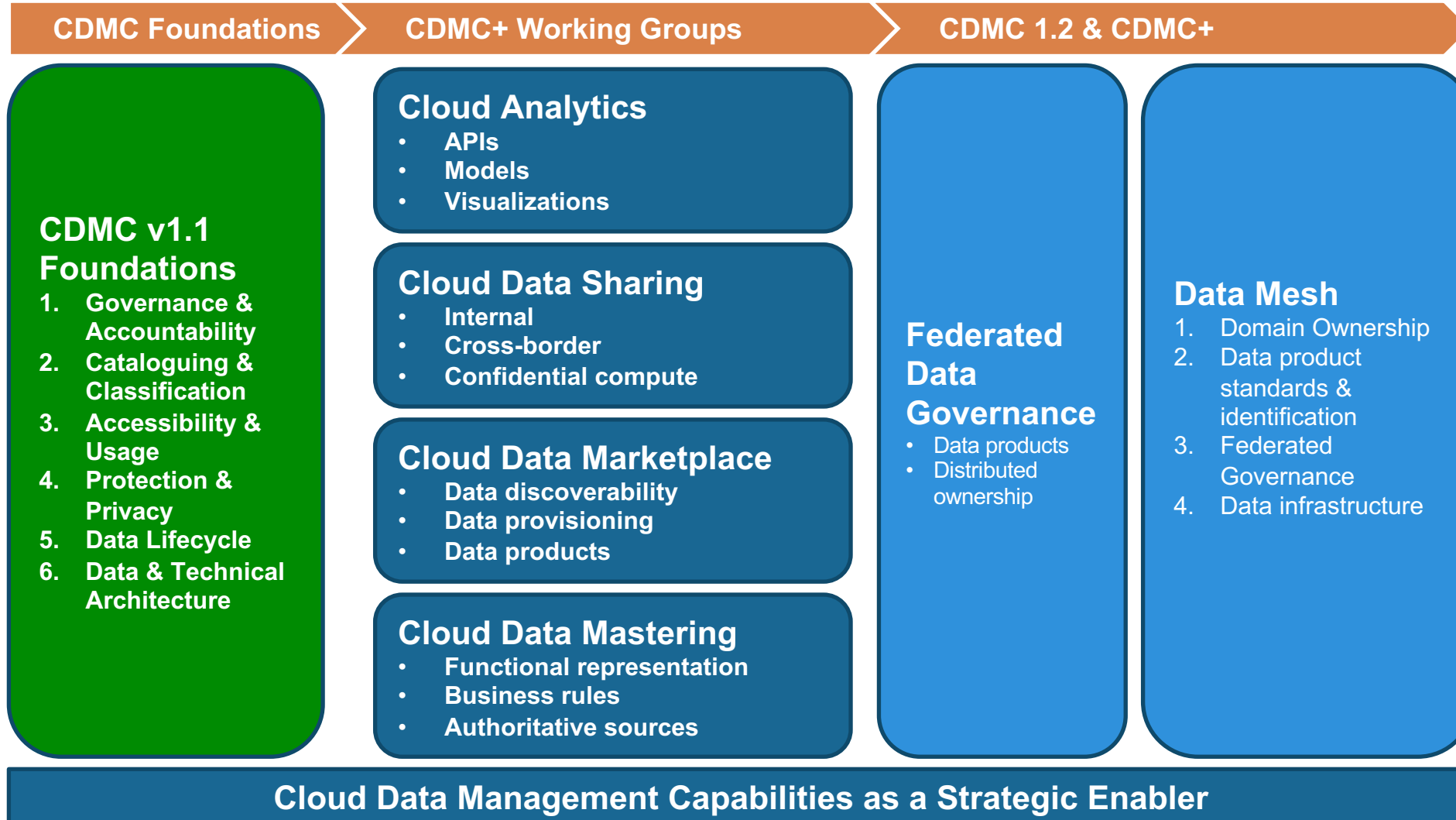
**Poll:
How involved
is your CDO
team in your
cloud journey?**



Next steps



CDMC+ Working Group Scope



Get involved



Learn more about the EDM Council and download the CDMC Framework

- [Download CDMC for free](#)
- [Learn more about EDM Council](#)
- [Learn more about CDMC FAQ](#)



Explore additional AWS resources

- [AWS Glue successfully assessed for all 14 controls in the CDMC framework](#)
- [AWS contributes to development of EDM Council's CDMC Framework](#)
- [AWS Well-Architected Tool](#)
- AWS Contact: ohris@amazon.com (Sanjay Ohri)



Choose a workload and perform your own CDMC assessment