

EDM Webinar

What Does It Mean to Be Data-Empowered?

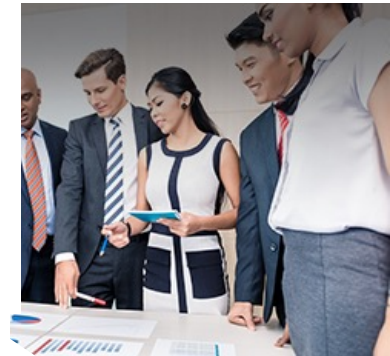
Discussion with:



Venkat Rajaji
*VP of Products, Quest
Software, Information
& Systems
Management*

Quest[®]


EDM Council



Moderated by **Mike Meriton**

Co-Founder & COO, EDM Council

- Mike is Co-Founder & COO of the EDM Council
- Served as the first Chairman and active Board member since inception in 2005
- Joined EDM Council in 2015 as a Senior Advisor to lead Industry Engagement strategy, new member services and Council Operations
- Previously the CEO of GoldenSource and held key executive roles at CheckFree (Fiserv), D&B and Oracle.



Today's speakers

Moderator



Mike Meriton

Co-Founder & COO
EDM Council



Venkat Rajaji

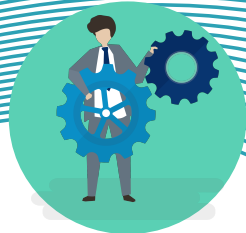
VP of Products, Quest
Software, Information &
Systems Management



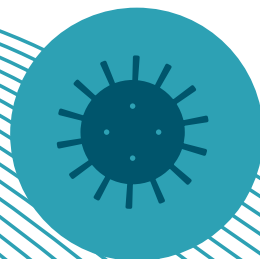


What Does It Mean to Be Data-Empowered?

customer challenges driving change



Digital
Transformation



Pandemic Driven
Business Impacts



App Modernization
and Shift to Cloud



Compliance and
Data Privacy



Corporate Risk
from Data
Breaches



Data Proliferation



Data Democratization



Quest®

Where Next Meets Now.

customer challenges
driving change

2-Quintillion Bytes

2 with 18 zeros

Bytes of data **everyday**



Quest®

Where Next Meets Now.

customer challenges driving change

88%
of new data is replicated, **60%**
of data is distributed on
endpoints and at the edge, and
19% of data is real-time data.



Quest®

Where Next Meets Now.

customer challenges
driving change

20%
of organisations last year
reported breaches resulting
from remote worker
compromise



Quest

Where Next Meets Now.

Customers are re-inventing and transforming their businesses – “Data Out”



A Platform for Data Empowerment

any data, from anywhere, to Empower Everyone

Data Protection

Data Security and Endpoint Management
Policy and Access Management
Audit and Compliance
Backup and Recovery

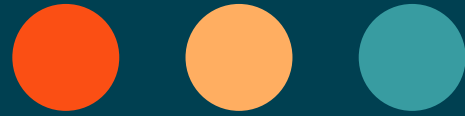
Data Operations

Data Movement
Data Modeling
Data Systems Performance Monitoring
Data DevOps and Preparation

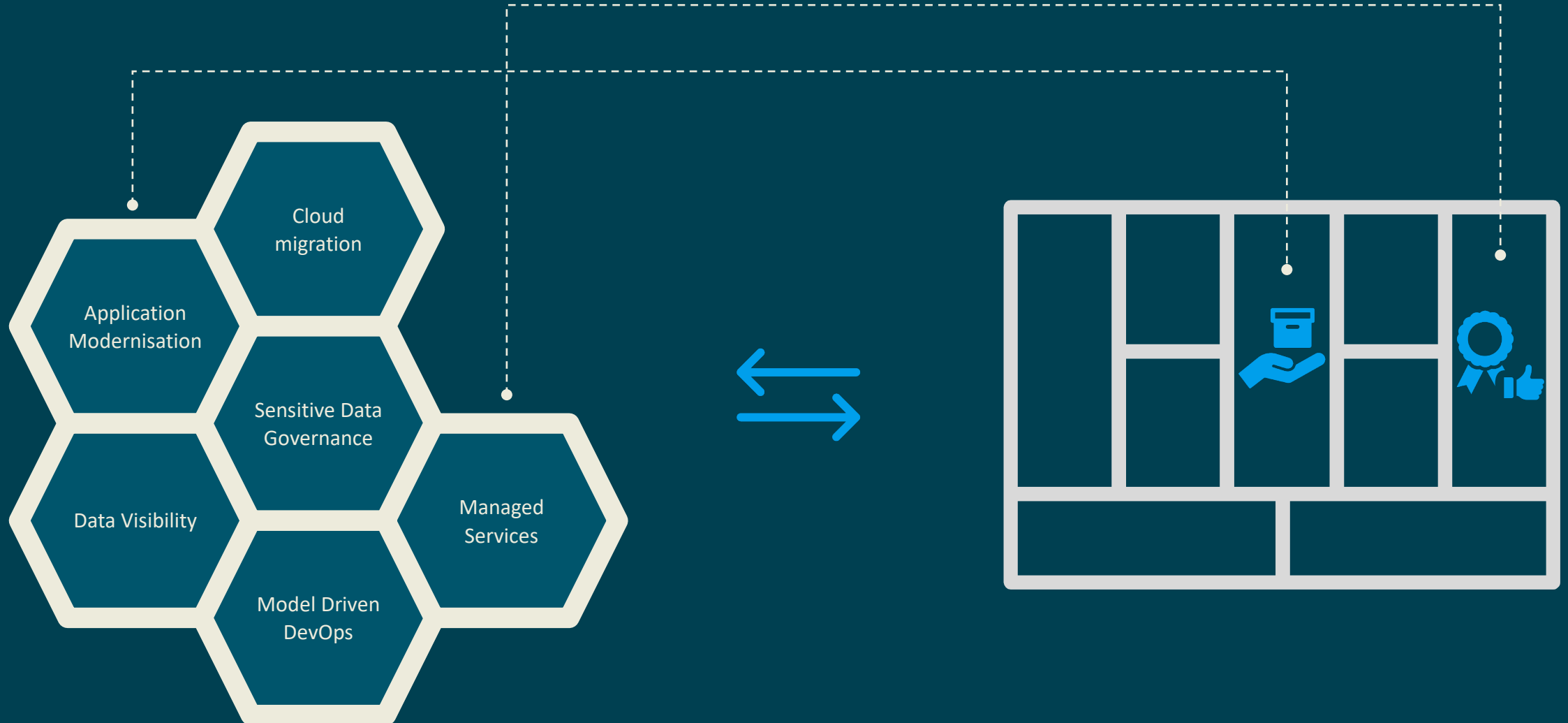
Data Governance

Data Catalog
Data Literacy
Data Profiling and Quality
Enterprise Architecture and Business
Process Modeling

Data Intelligence



Data Empowerment Platform



Key Considerations for Your Initiatives





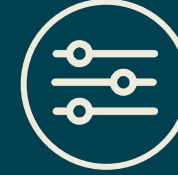
Benchmark

- Workload & Cost Benchmarking
- Sensitive Data Identification
- Sensitive Data Classification/Governance
- Assess & Prioritize Back-up and Secondary Storage



Migrate

- Schema, DDL, and DML Transformation
- Data Migration



Optimize & Tune

- Continued Performance Monitoring & Cost Optimization
- Ongoing DB DevOps
- Backup & Secondary Storage

empowering SENSITIVE DATA GOVERNANCE



Define

- Establish Enterprise Architecture and Business Processes
- Identify Sensitive Data through Data Models
- Classify Sensitive Data and set Policy



Discover

- Discover Sensitive Metadata from AI
- Discover Sensitive Data based on data patterns



Defend

- Encrypt Sensitive Data
- Mask and Redact Sensitive Data
- Audit Sensitive Data Transactions
- Prioritize and Protect Sensitive Data

empowering APPLICATION MODERNISATION



Model

- Model Data
- Model Schema
- Model Business Processes
- Model Enterprise Architecture
- Model Baseline Performance

Migrate

- Code Migration/ETL
- Data Migration
- VM/Cloud/Infrastructure Migration

Manage

- Data Querying
- Data Preparation
- Data Catalog

Monitor

- Database Monitoring
- Systems Monitoring
- Infrastructure/Cloud Monitoring

Govern

- Data Literacy
- Business Glossary
- Sensitive Data Governance

Protect

- Backup
- Restore
- Secondary Storage and Cost Optimization

A Platform for Data Empowerment

Any Data, from Anywhere, to Empower Everyone

Data Protection

Data Security and Endpoint Management
Policy and Access Management
Audit and Compliance
Backup and Recovery

[Learn More](#)

Data Operations

Data Movement
Data Modeling
Data Systems Performance Monitoring
Data DevOps and Preparation

[Learn More](#)

Data Governance

Data Catalog
Data Literacy
Data Profiling and Quality
Enterprise Architecture and Business
Process Modeling

[Learn More](#)

Data Intelligence

Questions?

Quest[®]

EDM Webinar 



Where Next Meets Now.

DATA EMPOWERMENT PLATFORM

an end-to-end set of solutions to save time, money and ensure delivery of transformative business value



erwin
Evolve



erwin Data
Intelligence



erwin Data
Modeler



erwin Data
Literacy



erwin Data
Catalog

Active Metadata
Management

Business Process
Modeling

Data Lineage

Enterprise
Architecture

Data
Stewardship

Data Profiling

Regulatory
Compliance

Impact
Analysis

Data Architecture

Impact Analysis

Data Catalog

Data
Governance

Secondary Storage &
Cost Optimization

Backup & Recovery

Inventory &
Asset Management

Load Balancing

Diagnostics

Monitoring

Data
Operations

Systems Monitoring &
Diagnostics

Cloud Cost Optimization

Policy &
Access Management

SQL Tuning &
Optimization

Administration

Development

DevOps

Backup

Data Modeling

Upgrades

Sensitive Data
Identification

Migration



Cyber
Resilience
Cloud Migration
SLA Performance
Application
Modernization
Sensitive Data Protection
Empower NoSQL
Model Driven DevOps

Data
Protection

Helpdesk

Software Compliance

Data provides the fuel for your business. But to fully leverage its opportunity and protect against its risk, it's essential to have software in place that empowers your entire organization. Quest's platform for Data Empowerment can do just that.

Strengthen your position to deliver cyber resilient services and transformative business value through data.

Starting with data first, builds better applications, improves processes, mitigates risk of waste and over-spend, ensures business value, while also delivering Governance and Security. Confidently tackle any data management or data governance initiative with one comprehensive software suite



RapidRecovery®



QoreStor™



QUESTIONS? CONTACT

YOUR QUEST REP or VISIT

www.quest.com/solutions/data-empowerment/

an end-to-end set of solutions that empower you and your organization's transformation initiatives



modernize infrastructure, optimize performance and deliver applications faster

Monitor, Diagnose and Resolve in Cloud, On-Premises, and Hybrid Environments

environment monitoring tools from Quest allow you to quickly identify, diagnose and resolve issues before they affect the business. Get a unified view of your diverse multi-database environment, whether it's located on-premises or in the cloud and receive alerts when database performance deviates from baselines. Infrastructure monitoring, maintenance and resource allocation solutions enable you to take a proactive approach to cloud management. You can simplify your data center to reduce infrastructure costs while accurately predicting future costs.

Compliance & Auditing for Data Privacy

sensitive data protection tools from Quest reduce the risk associated with storing personal and proprietary data. With automated discovery, database administrators can use a range of expressions and customizable rules to define and find sensitive data across databases. Developers can be notified if they include sensitive data in applications. When found, Quest tools can then employ masking, redaction and encryption to ensure data remains secure.

Cloud Migration and Management

migrating data and workloads to the cloud is a serious undertaking with inherent risks of downtime and data loss. Data replication, data movement and virtualization management tools from Quest help mitigate that risk by automating and streamlining cloud migration tasks and ensuring efficient cloud operations. Quest tools also help you select the right cloud tiers and then monitor workloads for optimal cost and performance.

Data Operations

empower your Database Professionals to focus on more meaningful and high value initiatives by giving them industry-leading data operations solutions that automate routine tasks, such as schema comparisons, script execution, report creation and distribution.

Develop and deploy high-quality, high-performing code nearly twice as fast as comparative toolsets. Extensive automation and collaboration functionality speed development cycles and minimize the risks of bugs and performance issues. DevOps tools from Quest help you monitor your DevOps pipeline and automatically replicate production changes.



establish a framework to access data assets, guidance on usage, and guardrails to ensure compliance.

Data Cataloging and Data Stewardship

improve data intelligence and decision-making across the enterprise by making it easy for stakeholders to discover, understand and trust relevant data. Automatically harvest relevant technical metadata for all data sources and dataflows across your entire landscape into one central location. Then add business context, data fitness and governance guidance, and socialize available assets widely via a self-service web portal.

Data Profiling and Quality

use data profiling capabilities when integrating new data sources into your data landscape to assess data fitness for use, keep data quality levels high, and ensure business users are provided with the high-quality data needed to drive effective decision-making and smooth operation.

Metadata Management

erwin's metadata management solution combines data management and data governance processes in an automated flow. It's unique in its ability to automatically harvest, transform and feed metadata from a wide array of data sources, operational processes, business applications and data models into a central data catalog and then make it accessible and understandable within the context of role-based views.

Business Process Modelling & Enterprise Architecture

ensure successful business transformations and project initiatives with full-featured, configurable enterprise architecture and business process modeling and analysis capabilities. Map IT abilities to the business functions they support and determine how people, process, data, technology and applications interact to ensure alignment to achieve enterprise objectives.

Automation

automation adds a lot of value by making processes more effective and efficient. For data governance, automation ensures the framework is always accurate and up-to-date; otherwise, the data governance initiative itself falls apart. Auto document; Auto Configure & Classify; Auto Render & Navigate; Auto Generate



scalable and secure capabilities for total data protection across the hybrid enterprise environment

Cyber Security

even the most prepared organization can't completely protect itself against ransomware attacks. Through automation and technology, Data Protection provides a simpler way to avoid the risks associated with intrusion and data loss. Employ proactive and defensive methodologies and technologies. From edge to core, preventing intrusion from vulnerabilities and protecting against data loss. Providing visibility of assets and data that provide known endpoints and protected data locations. Secure assets and data preventing unwanted access and quickly recover from data loss or corruption. Encrypt protected data and traffic that leaves the organizations trusted network for external storage to meet compliance regulations.

Back-up & Recovery (incl. M365)

Our scalable backup and recovery solutions cut backup windows from hours to minutes. Protect anything — systems, apps, data, including M365 data — anywhere, whether it's physical, virtual and or in the cloud. Back up physical and virtual machines with either agent-based or agentless backup, for the best of both worlds. M365 backup and recovery: Exchange Online, OneDrive, SharePoint Online, Active Directory, Teams, Calendars.

Hybrid Disaster Recovery

object storage is ideal for backup data because it can scale infinitely, is extremely cost-effective, works almost anywhere and is not tied to a specific size or format. Cloud tiering uses object storage in the cloud. This approach is becoming more popular with backup administrators dealing with the growing amount of data that may never be changed or accessed again. With the right architecture in place, organizations can rely on cloud tiering to lower the cost of data protection and make life easier for backup administrators.

Endpoint and User Management

Quest Unified Endpoint Management solutions help you fulfill all your endpoint and asset management needs and protect your data by securing your devices. Balance a secure environment with user productivity as you ensure comprehensive endpoint security for your hybrid workforce.



Where Next Meets Now.

A white circle graphic on the dark teal background.

The Data Empowerment Platform

Any Data, from Anywhere, to Empower Everyone



Venkat Rajaji

Venkat.Rajaji@quest.com

www.quest.com/solutions/data-empowerment/